

History:

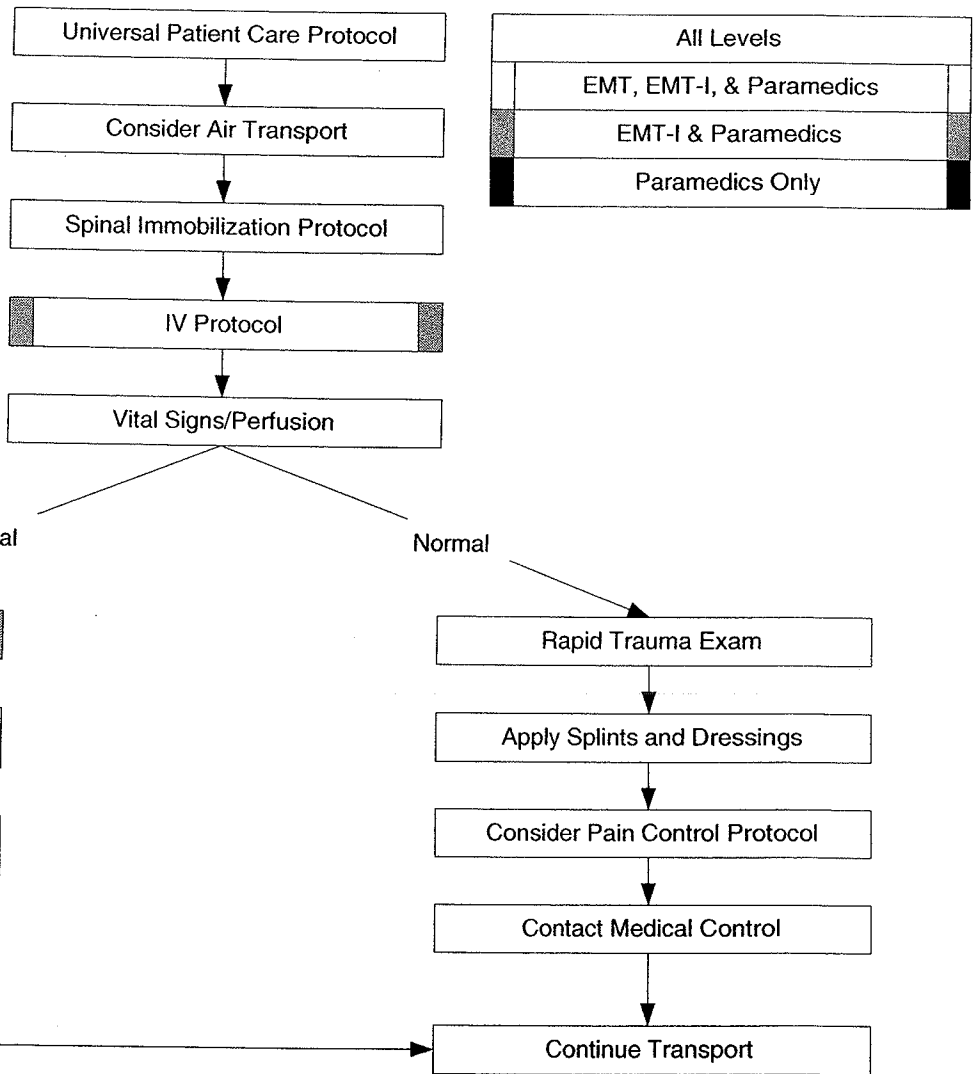
- Time and mechanism of injury
- Damage to structure or vehicle
- Location in structure or vehicle
- Others injured or dead
- Speed and details of MVC
- Restraints
- Ejection
- Past medical history/medications

Signs / Symptoms:

- Pain, swelling
- Deformity, lesions, bleeding
- Altered mental status
- Unconscious
- Hypotension or shock
- Arrest

Differential: (Life Threatening)

- Chest
 - Tension Pneumothorax
 - Flail Chest
 - Pericardial Tamponade
 - Open Chest Wound
 - Hemothorax
- Intra-abdominal Bleeding
- Pelvis-Femur Fracture
- Spine Fracture/Cord Injury
- Head Injury (see Head Trauma)
- Extremity Fracture/Dislocation
- HEENT (Airway Obstruction)
- Hypothermia



Pearls:

- Utilize the hemorrhage control procedure as needed.
- Exam: ABC's, Vital Signs, Mental Status, Skin, HEENT, Heart, Lung, Abdomen, Extremities, Back, Neuro
- Mechanism is the most reliable indicator of serious injury.
- In prolonged extrications or serious trauma consider air transportation for transport times and the ability to give blood.