



History:

- Type of injury
- Mechanism: crush vs. penetrating vs. amputation
- Time of injury
- Open vs. closed wound/fracture
- Wound contamination
- Age
- Past Medical History/Medications

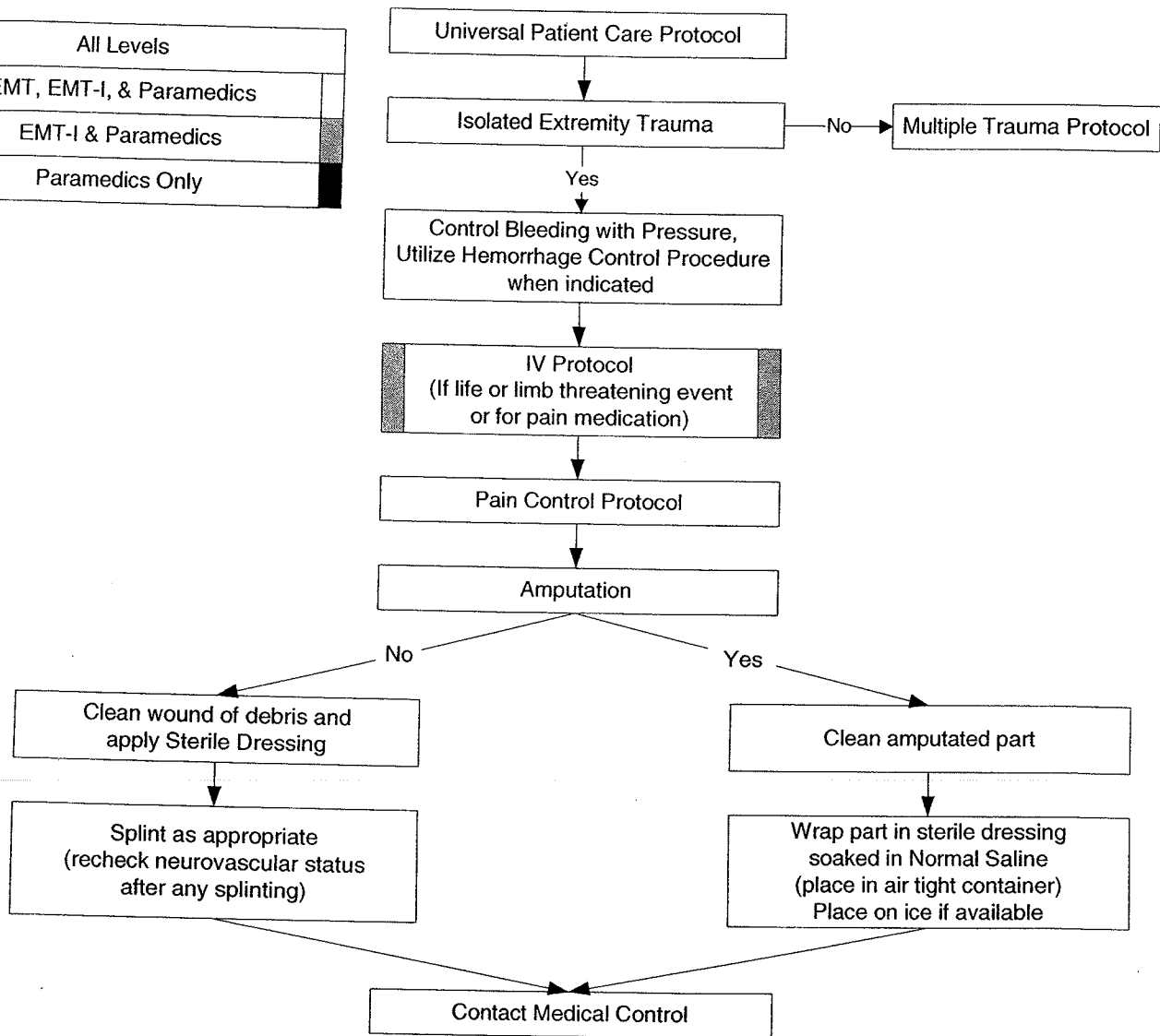
Signs / Symptoms:

- Pain, swelling
- Deformity
- Altered sensation or motor function
- Diminished pulse or capillary refill
- Decreased extremity temperature

Differential:

- Abrasion
- Contusion
- Laceration
- Sprain
- Dislocation
- Fracture
- Amputation

All Levels
EMT, EMT-I, & Paramedics
EMT-I & Paramedics
Paramedics Only



Pearls:

- When possible, reduce open fractures by placing exposed bone under the soft tissue envelope.
- Exam: ABC's, Vital Signs, Mental Status, Extremities, Neuro
- In amputations, time is critical. Transport and notify medical control immediately.
- Hip dislocations and Knee and Elbow fracture/dislocations have a high incidence of vascular compromise.
- Urgently transport any injury with vascular compromise.
- Blood loss may be concealed or not apparent with extremity injuries.
- Lacerations must be evaluated for repair within 6 hours from the time of injury.
- In gross angulations with vascular compromise, reduce extremity to position of function.