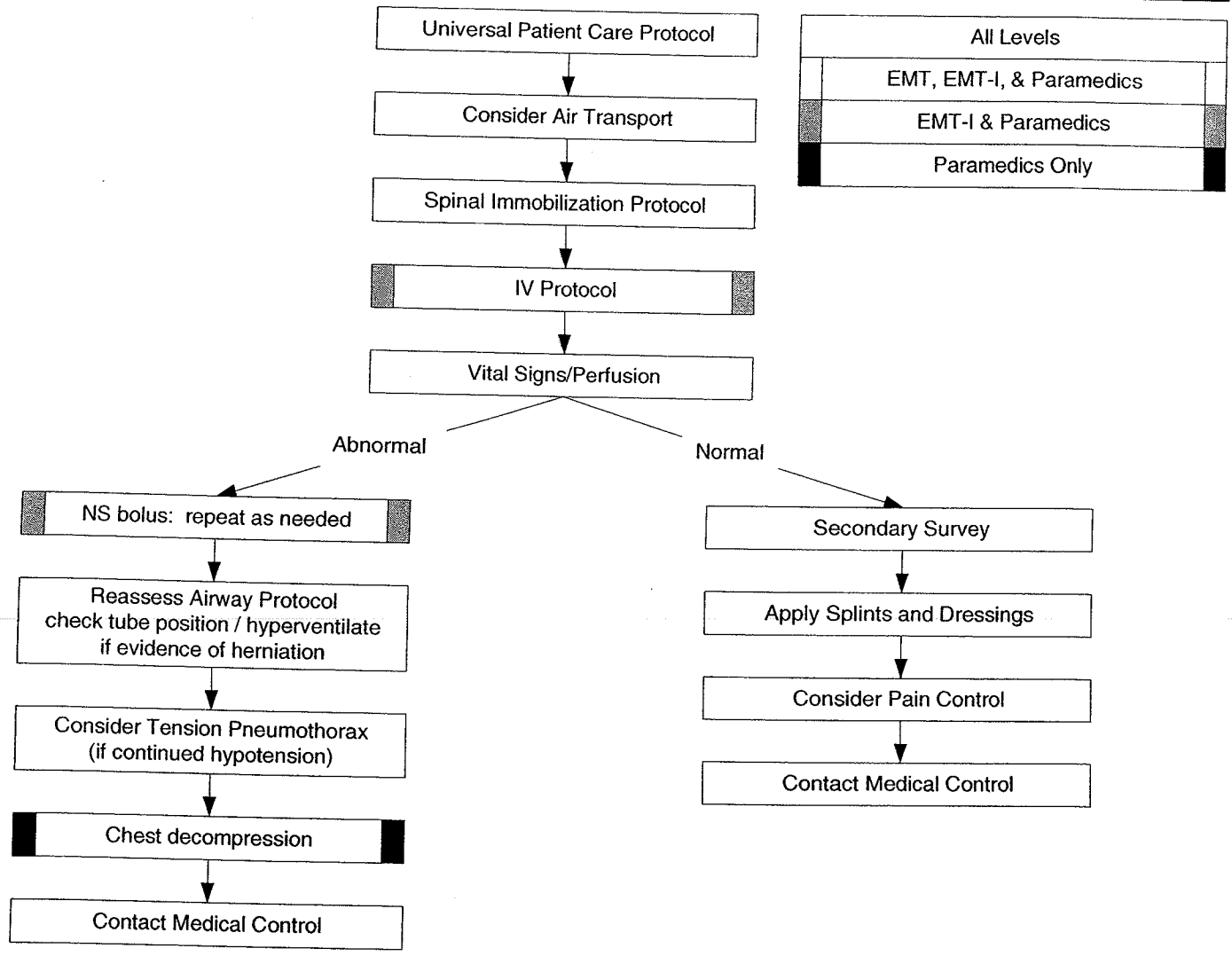


|  |  |   |
|--|--|---|
| <p><b>History:</b></p> <ul style="list-style-type: none"> <li>Time and mechanism of injury</li> <li>Damage to structure or vehicle</li> <li>Location in structure or vehicle</li> <li>Others injured or dead</li> <li>Speed and details of MVC</li> <li>Restraints/protective equipment</li> <li>Past medical history/medications</li> </ul> | <p><b>Signs / Symptoms:</b></p> <ul style="list-style-type: none"> <li>Pain, swelling</li> <li>Deformity, lesions, bleeding</li> <li>Altered mental status or unconscious</li> <li>Hypotension or shock</li> <li>Arrest</li> </ul> | <p><b>Differential: (Life Threatening):</b></p> <ul style="list-style-type: none"> <li>Chest <ul style="list-style-type: none"> <li>-Tension Pneumothorax</li> <li>-Flail Chest</li> <li>-Pericardial Tamponade</li> <li>-Open Chest Wound</li> <li>-Hemothorax</li> </ul> </li> <li>Intra-abdominal Bleeding</li> <li>Pelvis/Femur Fracture</li> <li>Spine Fracture/Cord Injury</li> <li>Head Injury (see Head Trauma)</li> <li>Extremity Fracture/Dislocation</li> <li>HEENT (Airway Obstruction)</li> <li>Hypothermia</li> </ul> |
|--|--|---|



**Pearls:**

- Utilize the hemorrhage control procedure as needed.
- Exam: ABC's, Vital Signs, Mental Status, Skin, HEENT, Heart, Lung, Abdomen, Extremities, Back, Neuro
- Mechanism is the most reliable indicator of serious injury.
- In prolonged extrications or serious trauma, consider Air transportation for transport times and the ability to give blood.